

**ACOUSTIC
WALL PANELS**
by adore[®]



Natural Veneer, PVC Films & Digital Printing

AUTHENTIC COLOURS

Our premium acoustic wall panels are available in a variety of high-quality finishes. Choose **natural wood veneer** for elegant, authentic look with rich grain patterns. Opt for **natural PVC film prints** for a realistic wood appearance combined with long lasting strength and versatility. For limitless design possibilities, **digital printing** allows for custom patterns, bold colours, or branding element with high-resolution precision.



PVC FILM COLOURS



ACWP 101



ACWP 102



ACWP 103



ACWP 104

NATURAL VENEER & DIGITAL PRINTING COLOURS ALSO AVAILABLE.
PLEASE CONTACT THE OFFICE FOR ADDITIONAL INFORMATION.

Additional colours available. Please note that the colour may vary from the image.





Acoustic Wall Panels

Finish

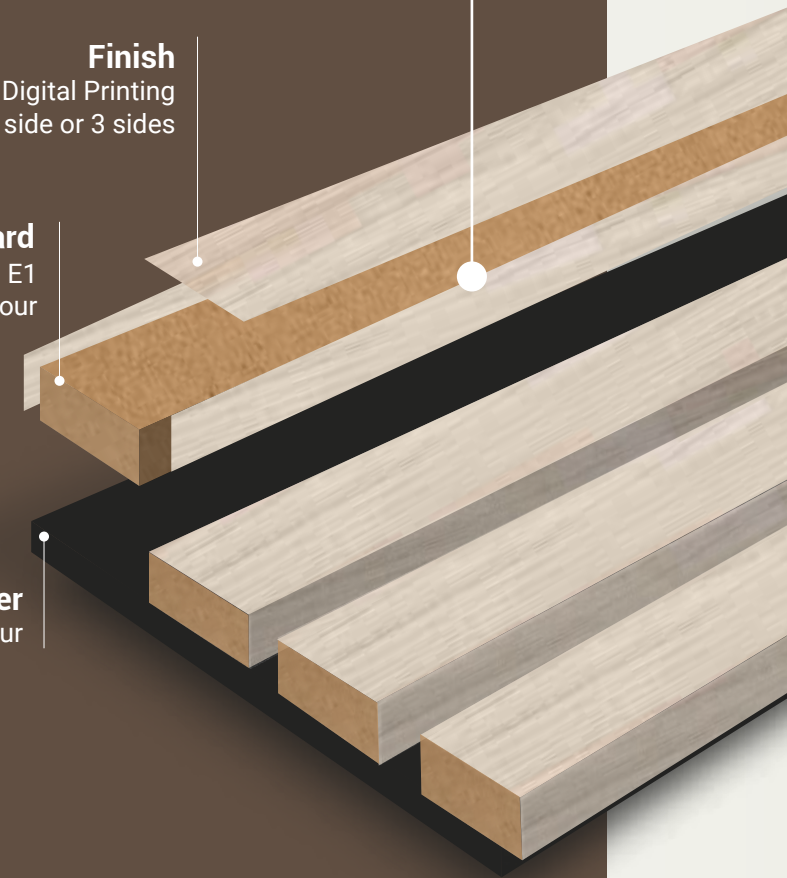
Natural Veneer, PVC Film, Digital Printing
1 side or 3 sides

MDF Board

Emission Class E1
Customisable Colour

PET Polyester Fiber

Customisable Colour



Flame retardant (Felt)

Can achieve EN 13501-1:2018
Class B, ASTM E84

NRC (Felt)

Direct installation, NRC 0.8

Maintenance


Clean using a vacuum cleaner or
a dry cloth; avoid using water

Installation

Use screws or mounting glue

Versatile Dimensions for any Wall



 **Lightweight**
≤ 11 kg per panel

Our acoustic wall panels come in a range of dimensions, ideal for both **commercial and residential spaces**. Combining elegance with functionality, these panels effectively reduce noise while enhancing aesthetics.

The MDF slats ensure durability, while their strategic spacing improves acoustics and adds visual depth.

Perfect for commercial or residential applications, these panels seamlessly integrate into any design, offering both **elegance and superior sound quality**.



Exceptional Acoustic Performance



Sound Absorption Value

Noise Reduction Coefficient: $NRC=0.8$
Average Sound Absorption : 0.9
Coefficient (300Hz-5000Hz)



100%
Recyclable



VOC Free



Easy
Installation



Sound
Absorption



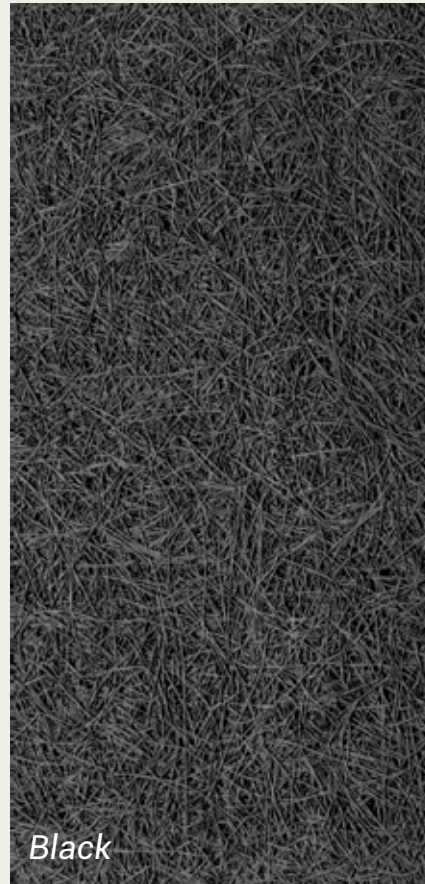
FSC Natural
Wood Veneer
Available



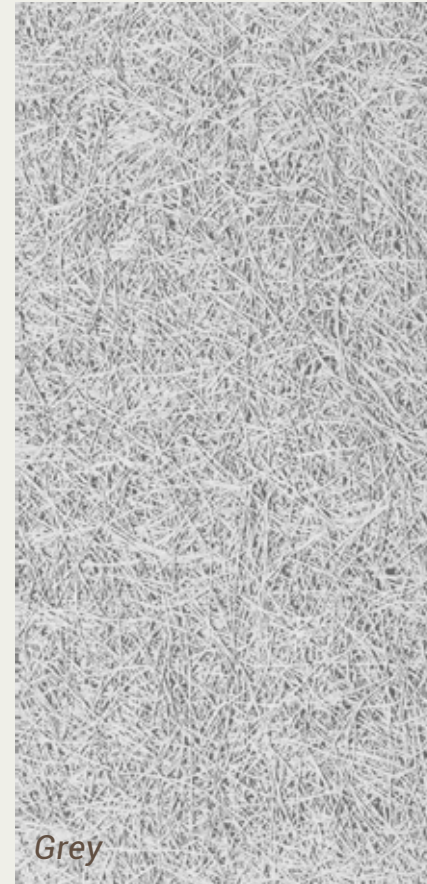


PET Polyester Fiber

SUSTAINABLE, DURABLE, SOUND ABSORPTION



Black



Grey



White



Size
600mm-3000mm

Thickness
9 mm



Size
600mm-3000mm

Thickness
9 mm



Size
600mm-3000mm

Thickness
9 mm



Complete it with Perfect Accessories

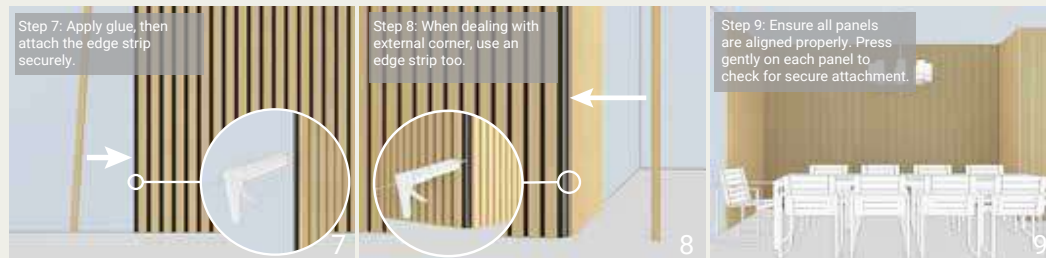
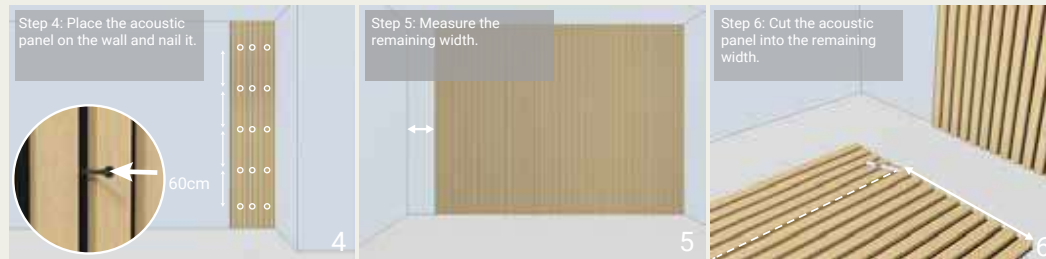
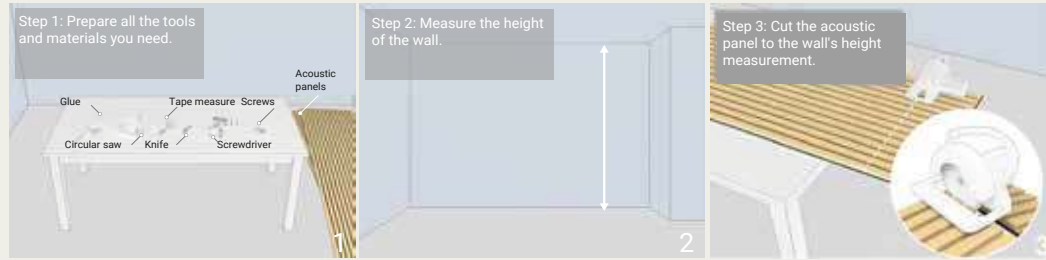
LED, SHELVES & MORE

These accessories add storage, lighting, and a sophisticated touch to your wall.

Durable and easy to install, they integrate into any space. Ideal for residential and commercial applications, these accessories offer practical solutions without compromising design or sound quality.



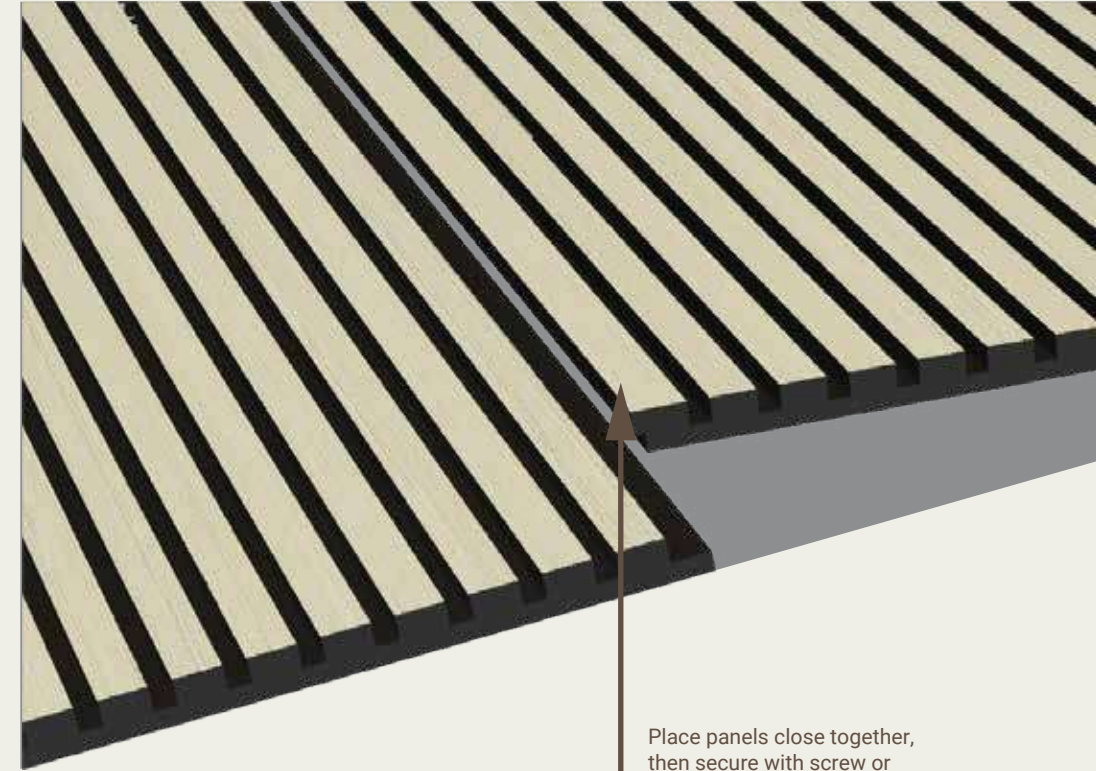
Installation



a. Nail acoustic panels directly to the wall.
Absorption class: D

b. Attach acoustic panels to the wall with nail-free glue.
Absorption class: D

c. Install fibreglass wool or rock wool between battens.
Absorption class: A

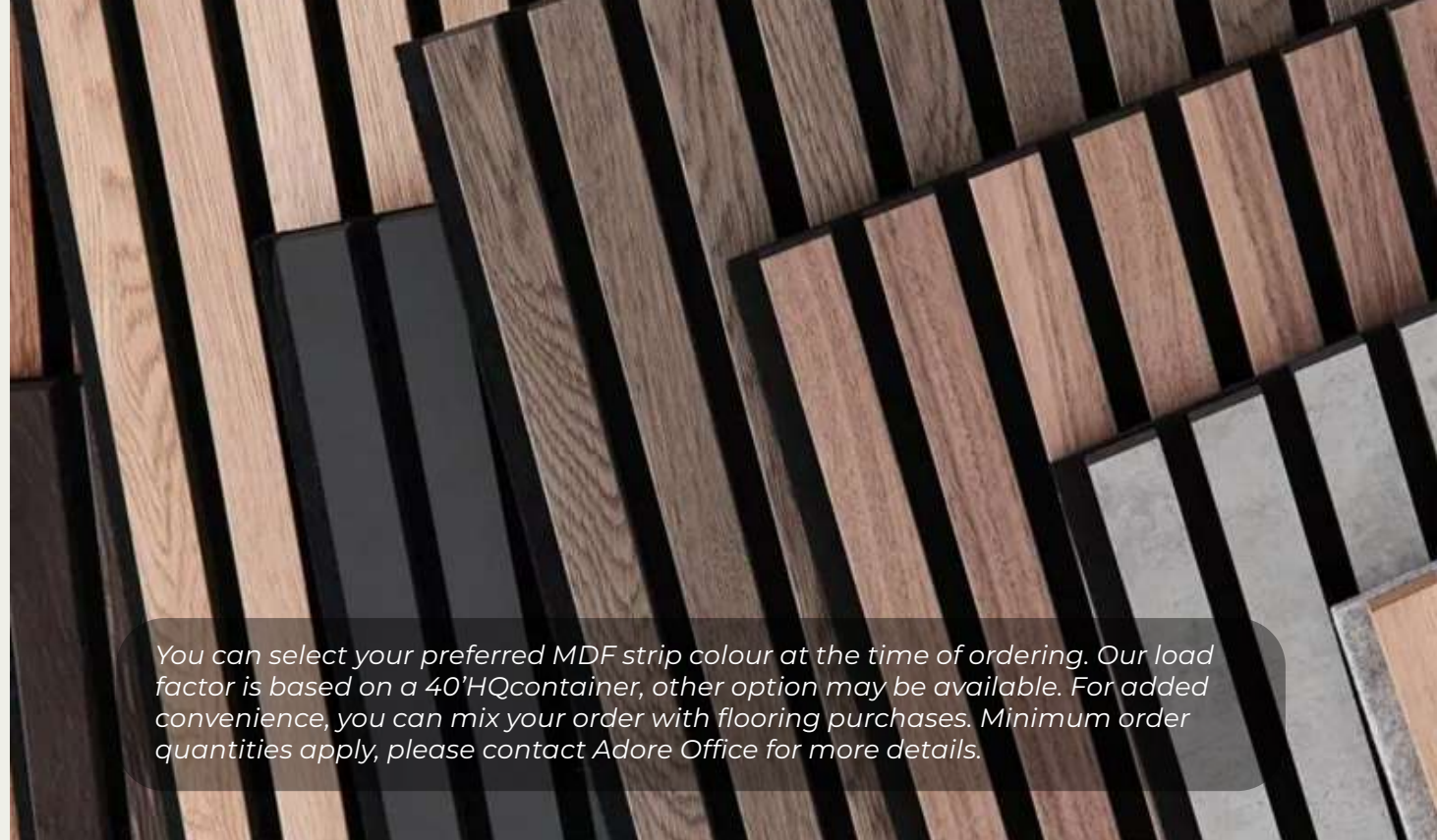


Easy to Install

With a few simple steps, you can create a quieter, more comfortable space.
No heavy-duty tools, no expensive labour, just a quick and easy DIY solution to reduce noise and add character.

Perfect for any room, any style, and any skill level!

| Information | | |
|-----------------------|------------------------------|-------------------|
| Dimensions | Up to 3000 x 600 mm | |
| | 2400 x 600 mm | |
| | 600 x 600 mm | |
| Total Thickness | 21 mm | |
| MDF Strip | Width | 27 mm |
| | Thickness | 12 mm |
| | Separation | 13 mm |
| | Colour | Black or Wood |
| | Edge | Square or Rounded |
| | Density | 740 kg/m3 |
| Surface | PVC Film on top (0.2 mm) | |
| | PVC Film on 3 sides (0.2 mm) | |
| | Veneer on top (0.4 mm) | |
| | Veneer on 3 sides (0.4 mm) | |
| | Digital Printing on top | |
| PET Thickness | 9.0 mm, Black | |
| MDF Strip / PET Fiber | Stappled together | |
| Installation Method | Glue or Screw | |



You can select your preferred MDF strip colour at the time of ordering. Our load factor is based on a 40'HQ container, other option may be available. For added convenience, you can mix your order with flooring purchases. Minimum order quantities apply, please contact Adore Office for more details.

| Load Factor 2400 x 600 x 21 mm (40' HQ container) | | |
|--|------------|------------------|
| Pc/box | | 2 |
| Sqm/box | | 2,88 |
| Qty | Pallets | 24 |
| | Bulk Boxes | 180 |
| Boxes/pallet | | 600 |
| Total Boxes | | 780 |
| Sqm/pallet | | 72 |
| Weight/boxes | | 21,6 |
| Weight/pcs | | 10,8 |
| Weight/pallets | | 540 |
| Sqm/container | | 2246,4 |
| Pallet Dimensions | | 2440x610x1030 mm |
| Pallet Weight | | 15 |

| Load Factor 600 x 600 x 21 mm (40' HQ container) | | |
|---|------------|-----------------|
| Pc/box | | 8 |
| Sqm/box | | 2,88 |
| Qty | Pallets | 56 |
| | Bulk Boxes | 152 |
| Boxes/pallet | | 784 |
| Total Boxes | | 936 |
| Sqm/pallet | | 40,32 |
| Weight/boxes | | 21,6 |
| Weight/pcs | | 5,4 |
| Weight/pallets | | 302 |
| Sqm/container | | 2695,68 |
| Pallet Dimensions | | 1220x610x990 mm |
| Pallet Weight | | 30 |

| Load Factor 3000 x 600 x 21 mm (40' HQ container) | | |
|--|------------|------------------|
| Pc/box | | 2 |
| Sqm/box | | 3,6 |
| Qty | Pallets | 18 |
| | Bulk Boxes | 80 |
| Boxes/pallet | | 450 |
| Total Boxes | | 530 |
| Sqm/pallet | | 90 |
| Weight/boxes | | 27 |
| Weight/pcs | | 13,5 |
| Weight/pallets | | 675 |
| Sqm/container | | 1908 |
| Pallet Dimensions | | 2440x610x1030 mm |
| Pallet Weight | | 40 |



VISIT OUR WEBSITE

ADORE FLOORS EUROPE

+353 1 4509802

contact@adorefloors.com

Unit 1, The Westway Center

Ballymount Avenue

Dublin 12, D12 E308, Ireland

